

An aerial photograph of an industrial facility, possibly a power plant or refinery. The central feature is a large circular structure with a complex internal layout, including two large cylindrical tanks and a central processing area. The facility is surrounded by a vast field of solar panels, which are arranged in a grid pattern and extend towards the horizon. The overall scene is captured from a high angle, providing a comprehensive view of the industrial complex and its surrounding infrastructure.

Connect your **INDUSTRIAL LIFECYCLE**

Design, build, operate and
optimize the future with us

Doug Warren
SVP- HMI/SCADA Business, AVEVA

147 zettabytes
of industrial data



AVEVA

Connecting people to that data is key to success

40%

of global organizations will have an ecosystem platform by 2025

7+%

higher growth for companies who advance in their digital transformation journey

Integrating information can be challenging

Information silos

Inconsistent data

Need to predict outcomes

Difficulty understanding multi-site performance

Limited virtual and remote collaboration



**TRUSTED
INTELLIGENCE**

**ACTIONABLE
INSIGHT**

**UNIFIED
EXPERIENCE**

**EMPOWERED
ECOSYSTEM**

AVEVA

We are building the world's biggest
industrial ecosystem

CONNECT

AVEVA

The power of **connected industrial ecosystems**



Producers



Suppliers



Logistics



Executives



Integrators



Distributors



Consumers

CONNECT

Data

Intelligent Twin

Experience

Empowered Ecosystem

AVEVA

Schneider
Electric

RIB

etap®

...

Our open, intelligent twin
enables innovation across
the industrial lifecycle



DESIGN

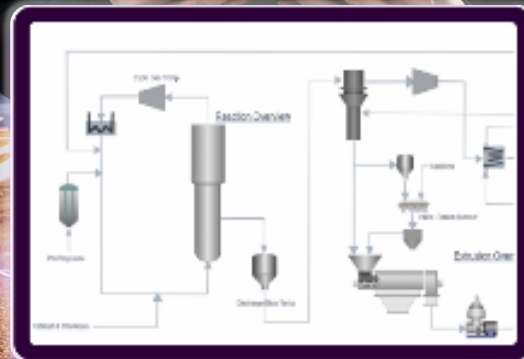


OPTIMIZE



BUILD

CONNECT



OPERATE

AVEVA

Imagine

the next evolution of industry

AVEVA

Design



Build



Operate



Optimize



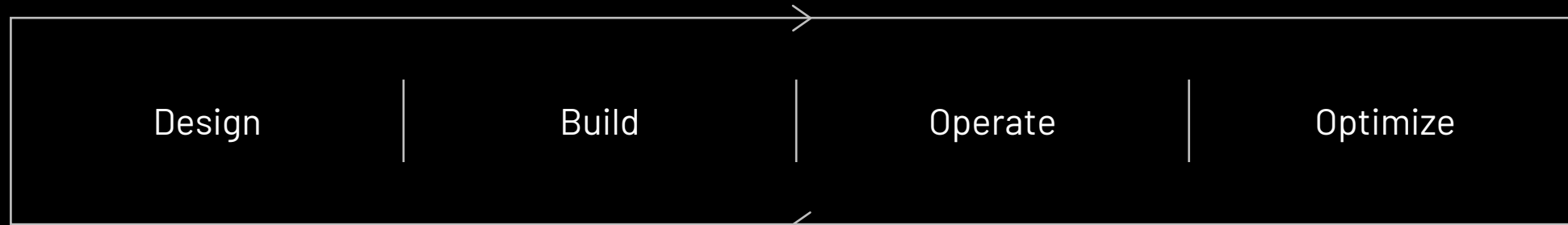
CONNECT

Intelligence platform for the connected industrial economy

Seamless experience

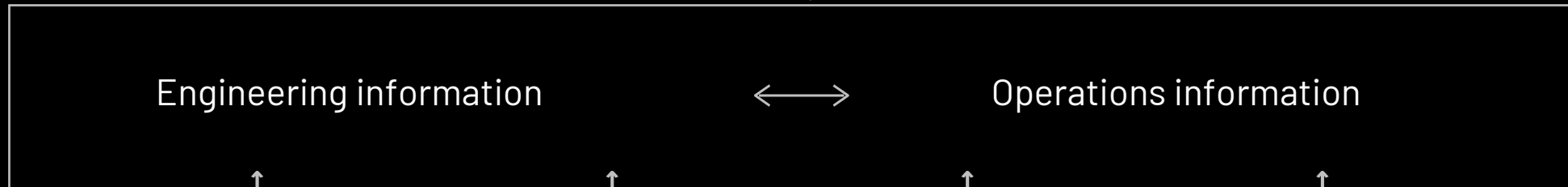


Applications and analytics

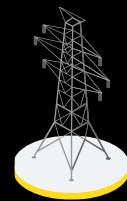


Ecosystem of developers and partners

Information

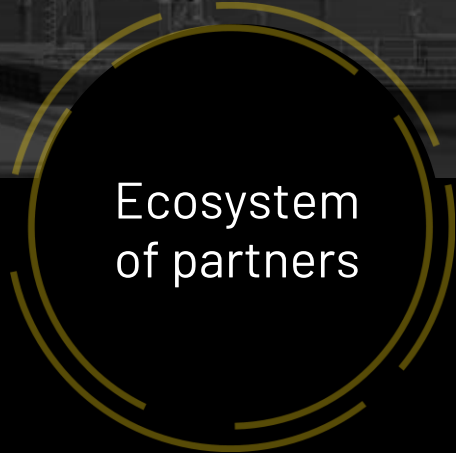


Assets and devices



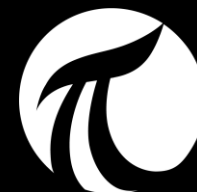
CONNECT

Extending existing investments and capabilities



AVEVA
Unified Engineering

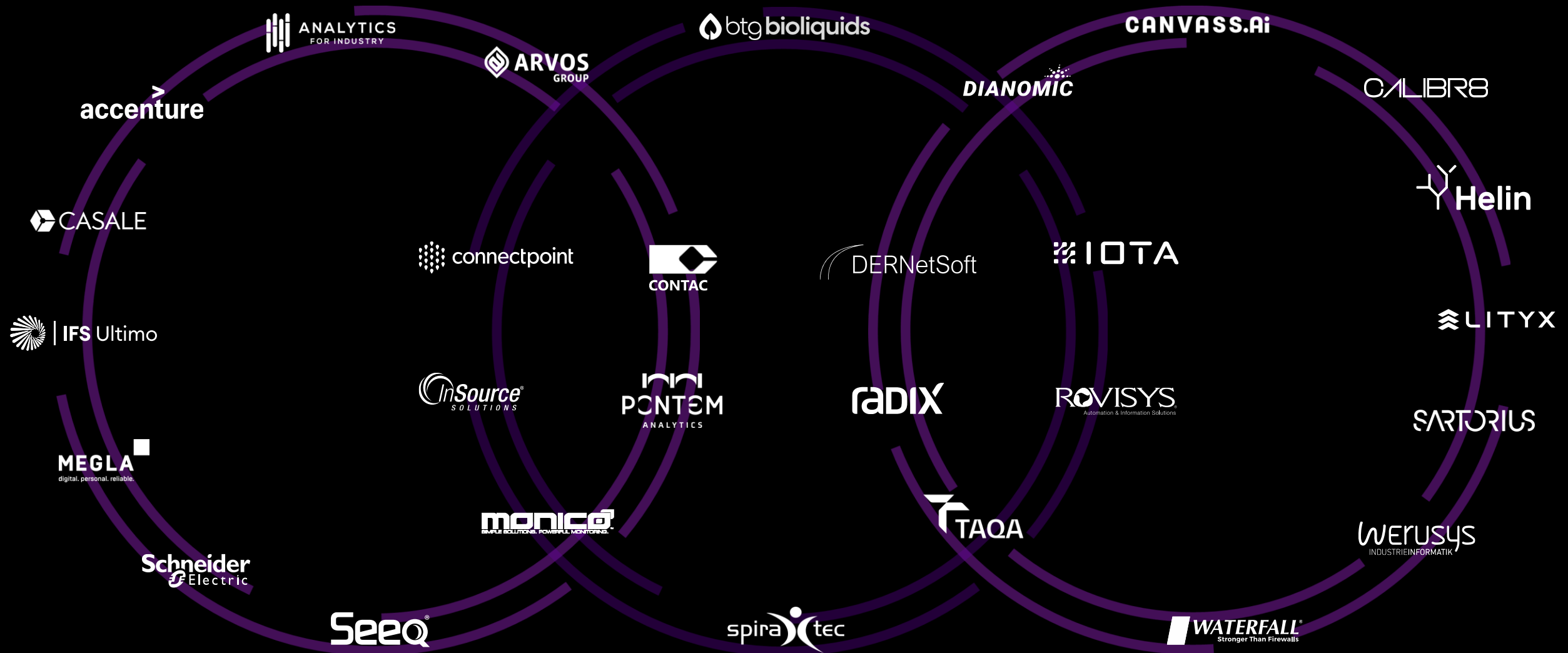
Wonderware[®]



Third Party
Data Sources

CONNECT

Early Adopter Partners- bringing specific expertise



Delivering a seamless
experience from
digital twin to
digital enterprise



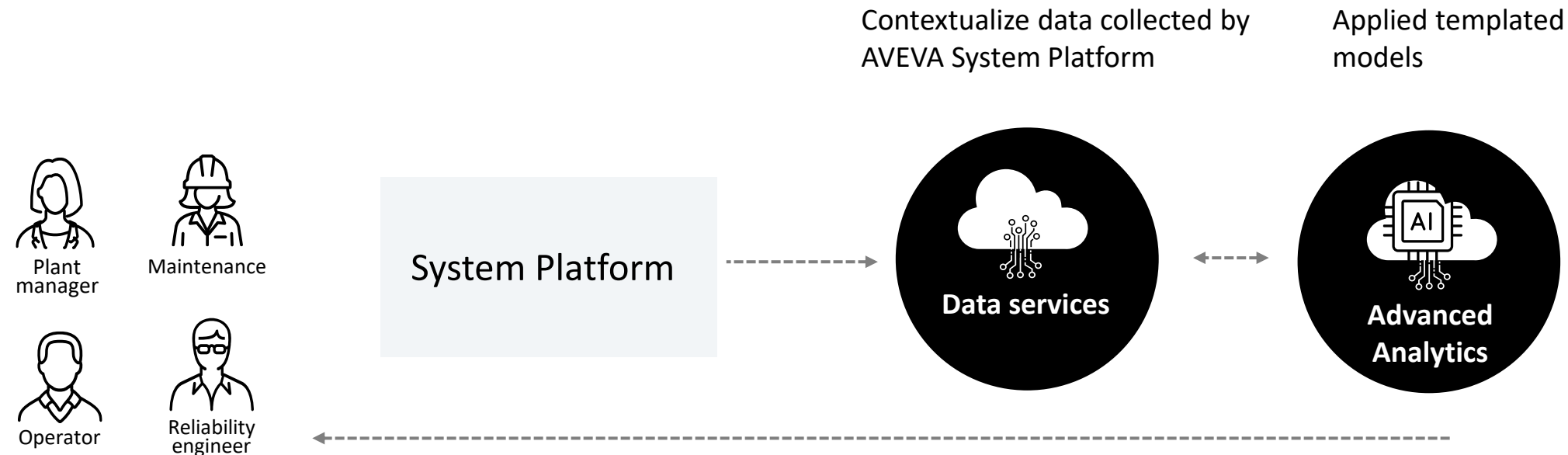


Reduces environmental impact and increases supply of treated water

- Acciona Agua is a world leading EPC in the construction of desalination plants
- Acciona has collaborated with Schneider Electric for many years in support of their Digital Transformation journey
- AVEVA was introduced to support:
 - Increased water production capacity and reduction of energy use
 - Improve the performance of all water treatment facilities with minimum impact to the environment
 - Provide a digital solution that could anticipate equipment behavior deviations and find the optimum operating point in real-time



Aggregate and contextualize industrial data to create incremental customer value



- Prediction model enabled optimization of energy recovery systems resulting in 4.6% reduction in energy consumption of the high-pressure pumps, and increased production capacity of this section of the reverse osmosis system by 16 m³/hour
- Increased efficiency in O&M teams thanks to readily available information
- Improved confidence from clients due to transparency of operations

Innovation lighthouse: Industrial generative AI



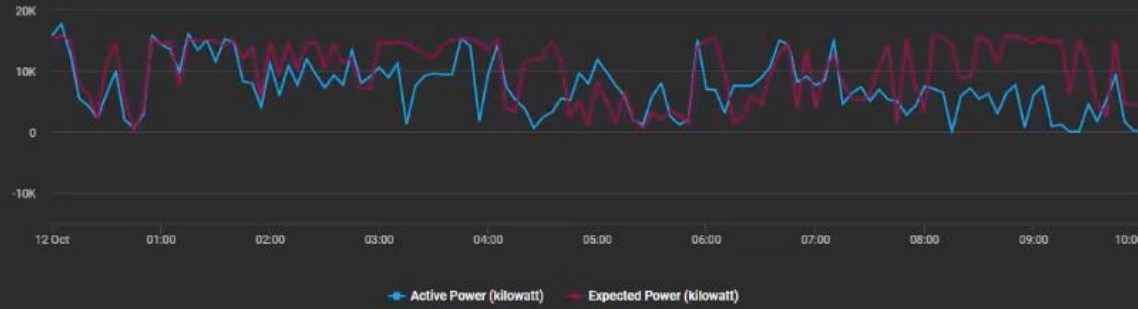
- Home
- Assets
- Lists
- Content
- Dashboards**
- Applications
- Settings
- Recently Viewed

Hornsea Performance

Edit

Actual vs Expected Power

10/12/2023 12:00:00 am - 10/12/2023 10:00:34 am



Turbine Summary

10/12/2023 12:00:00 am - 10/12/2023 10:00:34 am



Wind Speed



Utilization Time Line

10/12/2023 12:00:00 am - 10/12/2023 10:00:34 am



Utilization Summary

10/12/2023 12:00:00 am - 10/12/2023 10:00:34 am



Equivalent Availability MTD

43.96 %

Time navigation controls: 30D, 7D, 3D, YESTERDAY, TODAY (selected), 12H, 1H, CUSTOM

An aerial photograph showing a vast landscape of rolling hills and mountains. The lower portions of the terrain are completely obscured by a thick, white layer of clouds, creating a 'sea of clouds' effect. The sky above is a clear, vibrant blue, dotted with scattered, fluffy white clouds. The overall scene conveys a sense of height, openness, and natural beauty.

Build **connections**,
spark your **ingenuity**

AVEVA